



Ryan Buysens

email: rcbuysens@hotmail.com web: framedragging.com

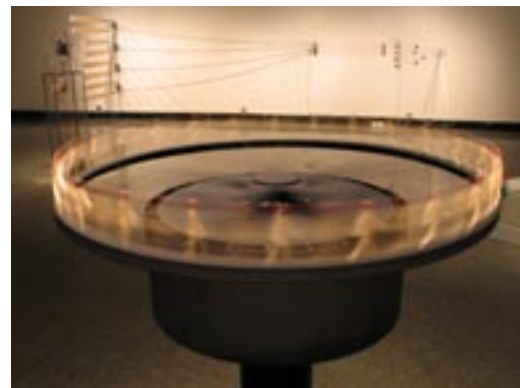
Selected Sculpture

promenade

2006
electric motor, micro-controller, wood, metal, matches
2' X 2' X 4'

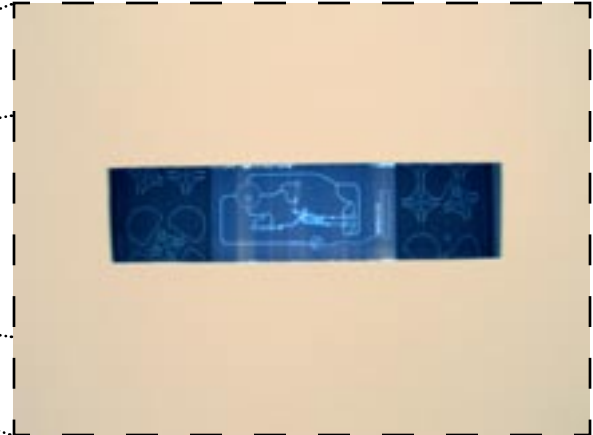
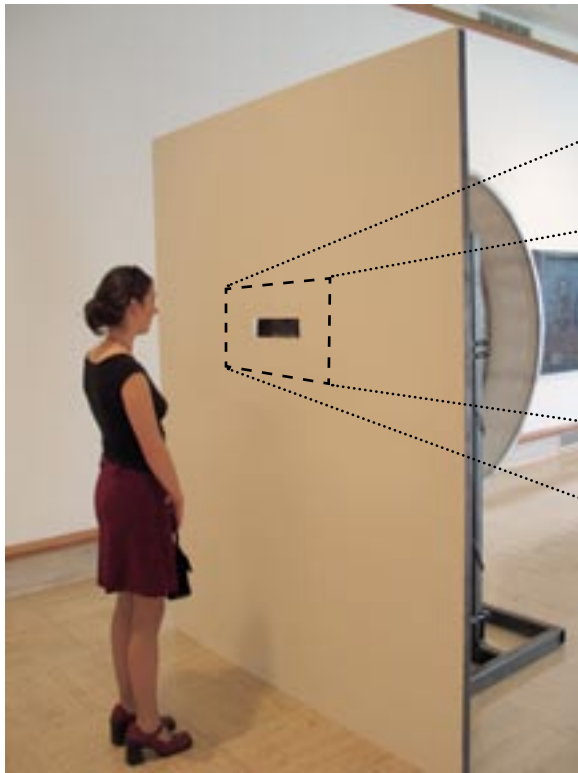


A horizontally-oriented, motor-driven wheel is mounted atop a pedestal. The motor that drives the wheel is connected to a programmed micro-controller that instructs it to run and stop in rapid succession. The resulting intermittent movement creates an animated effect in the tiny figures, constructed from matchsticks, mounted on the wheel's perimeter.



contrivance

2004
metal, electric motor, strobe, plexiglass, wood, archival prints
6' X 6' X 8'



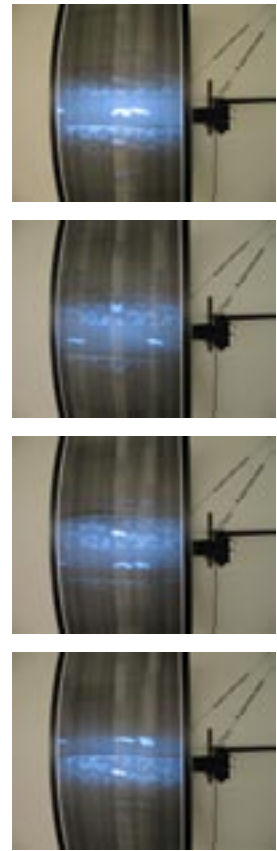
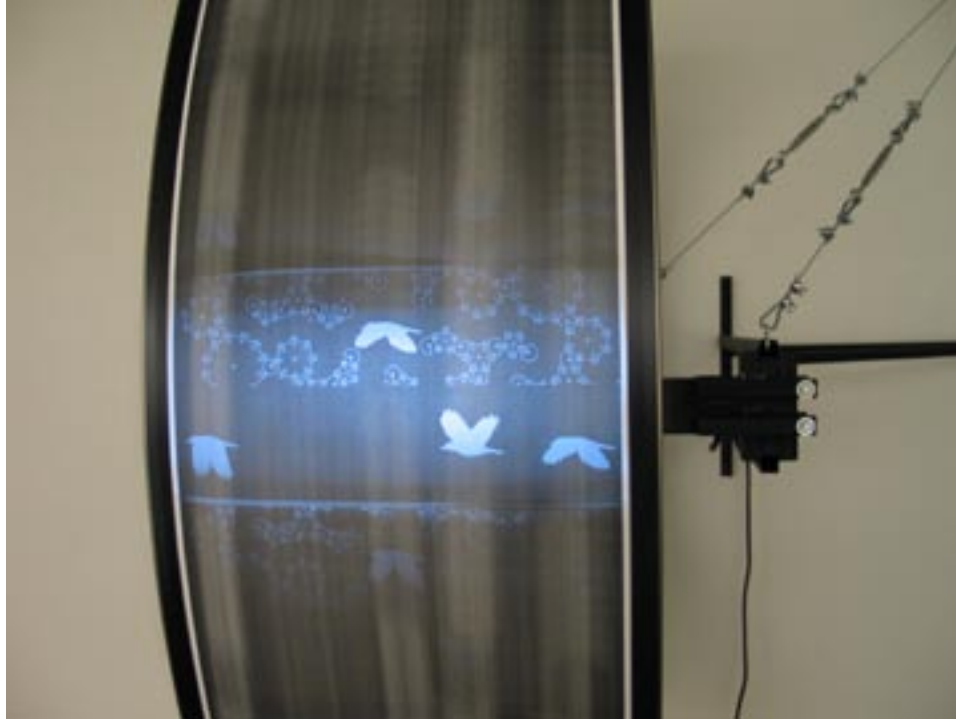
a view of an animation through the wall aperture



This device consists of a wall attached to a floor mounted, motorized wheel with translucent sequential images printed on its perimeter. A strobe mounted inside the wheel facilitates the persistence of vision effect that can only be seen through an aperture in the wall.

contrivance II
(with birds and genevas animation)

2005
stainless steel, electric motor, strobe, archival prints
5' X 4' X 8'

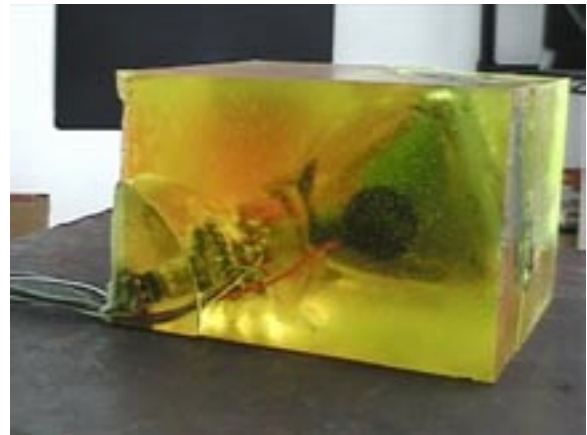
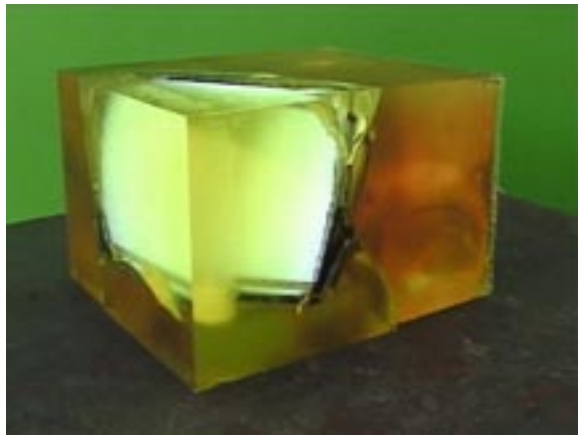


Mechanically identical to the original contrivance, this piece is cantilevered out from a wall. It does not utilize a viewing aperture but rather allows the full effect of the rotating imagery to be presented with the mechanism.



embedment

2003
resin, cathode-ray tube, video footage
6" X 10" X 4"



A cathode-ray tube (CRT) cast inside a block of resin. The CRT retains its functionality and displays a video of a high-speed capture of another CRT displaying single frames of text. Filmed at high-speed (1500 fps) the single video frames become visible as two distinct, interlaced fields drawn by an electron beam. The glowing images refract against the interior of the resin encasement.



phenakistoscope

2005
wood, metal, archival print
8" X 12" X 12"



A phenakistoscope is one of the earliest of the optical toys from the 19th century. My variation on the original stands on a table-top and is rotated using a wooden knob mounted at the center of the shutter disc. The image discs are interchangeable so that many different animations may be played on one device.



snow sculpture

2005
snow
8' X 8' X 8'



As an avid participant in Michigan's seasonal snow sculpting circuit, I became captain of my own team. Beginning with my concept of carving negative space from the block, the entire team gave the piece it's content. We took second place at Detroit's "Motown Winter Blast" in 2005.



studio

2005
mixed media
dimensions variable



An average, clean day in my studio.

